

# ***Product Information Management (PIM)***

## ***Connection Instructions***

*V. 1.0*

*March 22, 2017*



**Service is our best part.**

## **PIM = Product information Management**

PIM information consists of PIES/PILS data, digital images, and ACEs files for parts. This process also includes a way to retrieve/send Discrepancy information.

## **Automated SFTP Upload Process**

### **Overview**

This process has been made available for suppliers that will allow them to upload their PIM files to Advance Auto Parts (AAP) via Secure File Transfer Protocol (SFTP). This allows set up for an automated upload from an external system with relative ease.

### **SFTP Connection**

The settings for the vendor's SFTP connection are as follows:

1. **URL – si-web.advanceautoparts.com Port: 50415**
  - **(IP: 205.132.9.201)**
  
2. **User ID & Password will be sent to each individual supplier.**

## Using an SFTP Client

If the supplier has an SFTP client they already use, they can use the same connection information that is listed on page 2 for FileZilla.

If a supplier does not have an SFTP client they currently use, a number of SFTP clients may be downloaded from the Internet. There are many choices available for use & they should be researched by the supplier to determine the best suitable solution for their organization.

Advance Auto Parts will not support the vendor's selected software connectivity tool. Advance Auto Parts will provide support only for User ID and/or password issues.

One of the most widely used and reliable products is called FileZilla. For demonstration purposes only, we will use FileZilla for an **EXAMPLE** of how to set up & transmit an Inventory File.

This SFTP client is **NOT** required or endorsed in any way by Advance Auto Parts.

*Please Note: FileZilla only allows for manual transmissions & does not have a way to create an automated process.*

It can be downloaded at:

<http://filezilla-project.org/>

If FileZilla is the selected client, please download the **FileZilla Client**.

FileZilla - The free FTP solution

### Overview

Welcome to the homepage of FileZilla, the free FTP solution. Both a client and a server are available. FileZilla is open source software distributed free of charge under the terms of the GNU General Public License

Support is available through our [forums](#), the [wiki](#) and the [bug and feature request trackers](#).

In addition, you will find documentation on how to compile FileZilla and nightly builds for multiple platforms in the development section.

#### Quick download links

- Download FileZilla Client**  
All platforms
- Download FileZilla Server**  
Windows only

Pick the client if you want to transfer files. Get the server if you want to make files available for others.

#### News

- 2011-06-07 - FileZilla Server 0.9.39 released

#### Bugfixes and minor changes:

- Do not attempt to display a message box if creating an administration interface binding fails. This freezes the service on some machines.
- On FTP over TLS connections, the socket address family was not initialized from the underlying socket
- Fix a bug in IPv4 address filters and increase their performance

- 2011-06-05 - FileZilla Server 0.9.38 released

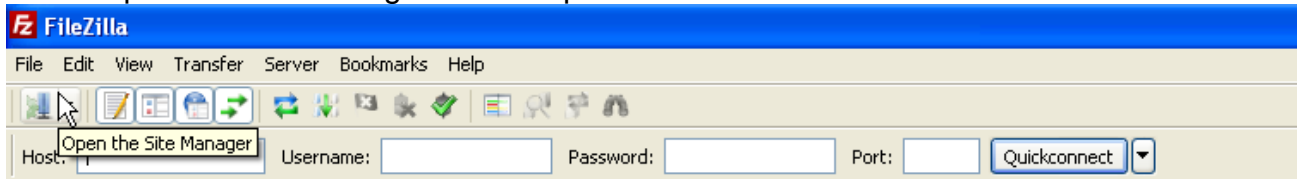
#### New features:

- IPv6 support
- Range, wildcard, regular expression and dot-decimal notation subnet IP address filters have been removed. These filter rules need to be recreated using CIDR notation

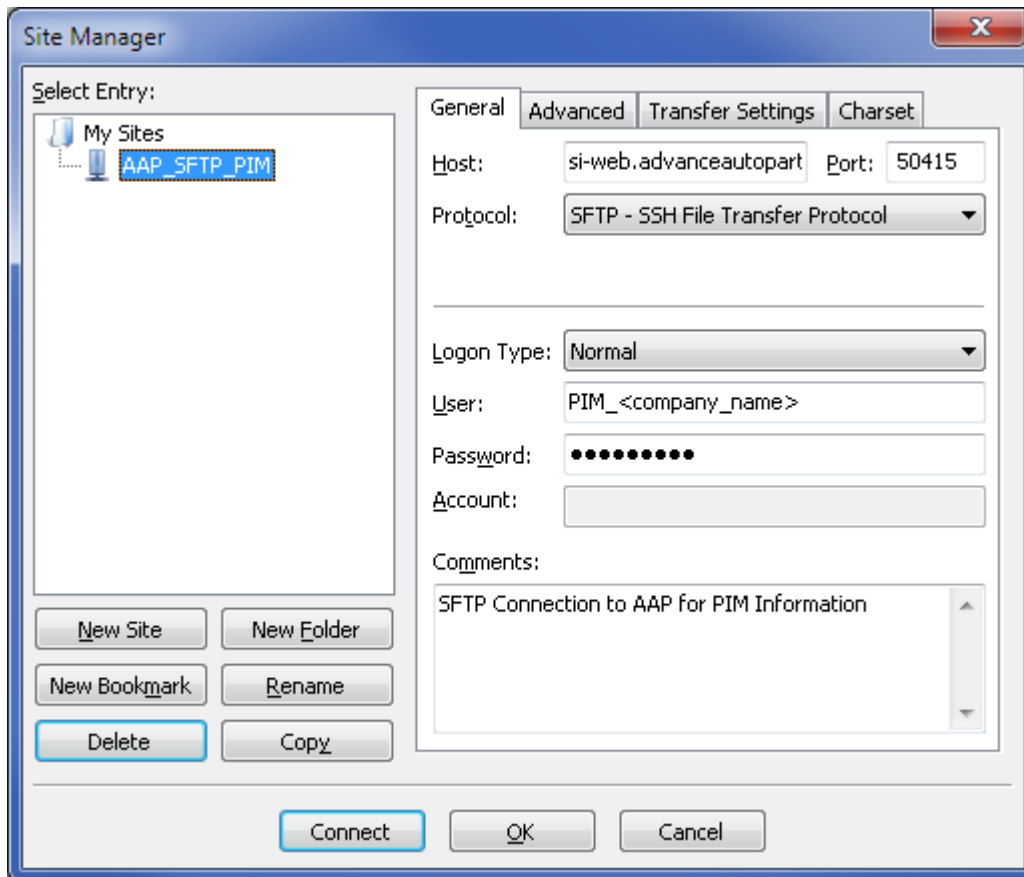
Once FileZilla has been installed, use the steps on the next page to set up the connection to Advance Auto Parts.

## Setting up FileZilla to connect to AAP:

1. Open FileZilla.
2. Open the Site Manager on the top left of the tool bar.

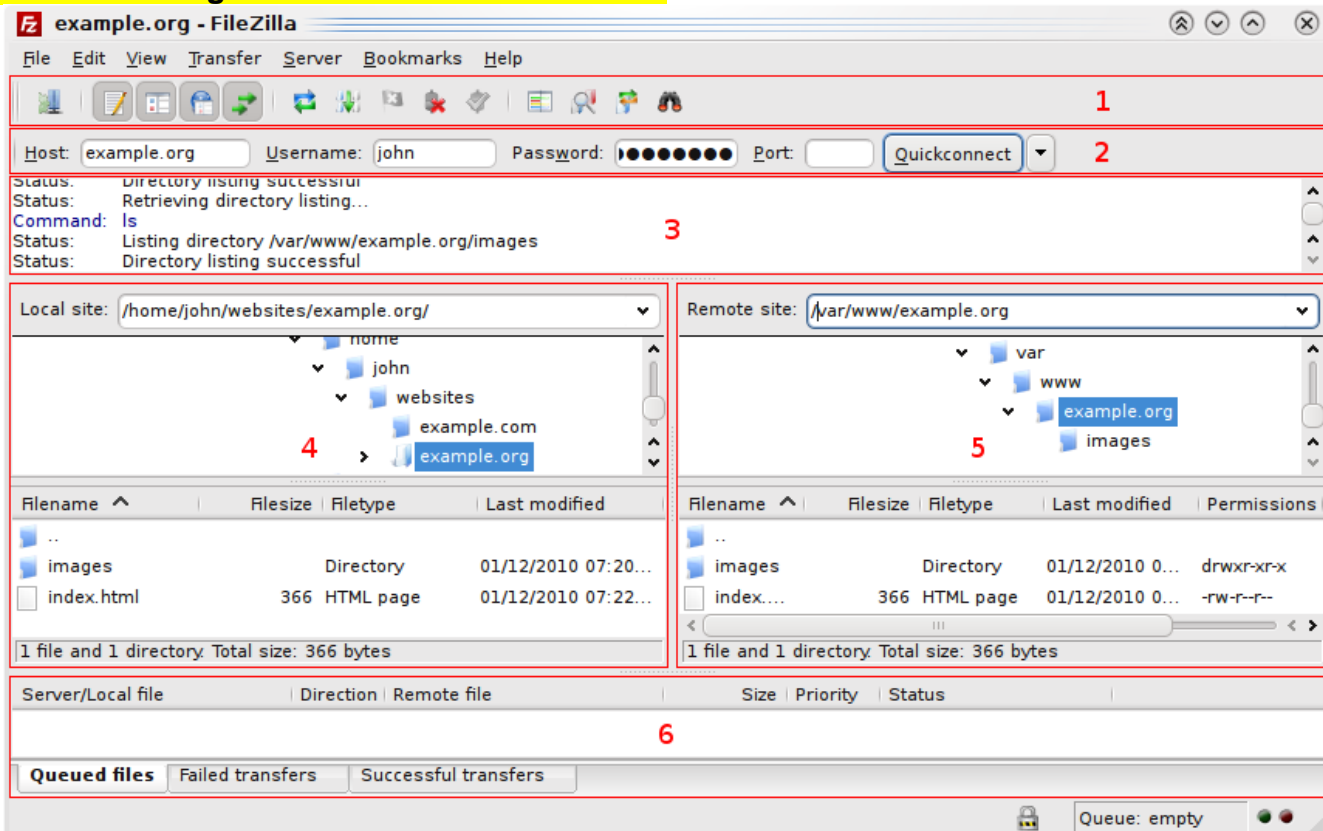


- a. Select New Site & provide a name.
- b. Host: **si-web.advanceautoparts.com**
- c. Port: **50415**
- d. Protocol: **SFTP – SSH File Transfer Protocol**
- e. Logon Type: **Normal**
- f. User: **The login you were provided.**
- g. Password: **The password you were provided.**
- h. Account: **Blank**
- i. Select **OK** & then **Connect** to establish the connection.



## How to transfer your inventory file to Advance Auto Parts

### Understanding the 6 sections of the screen:



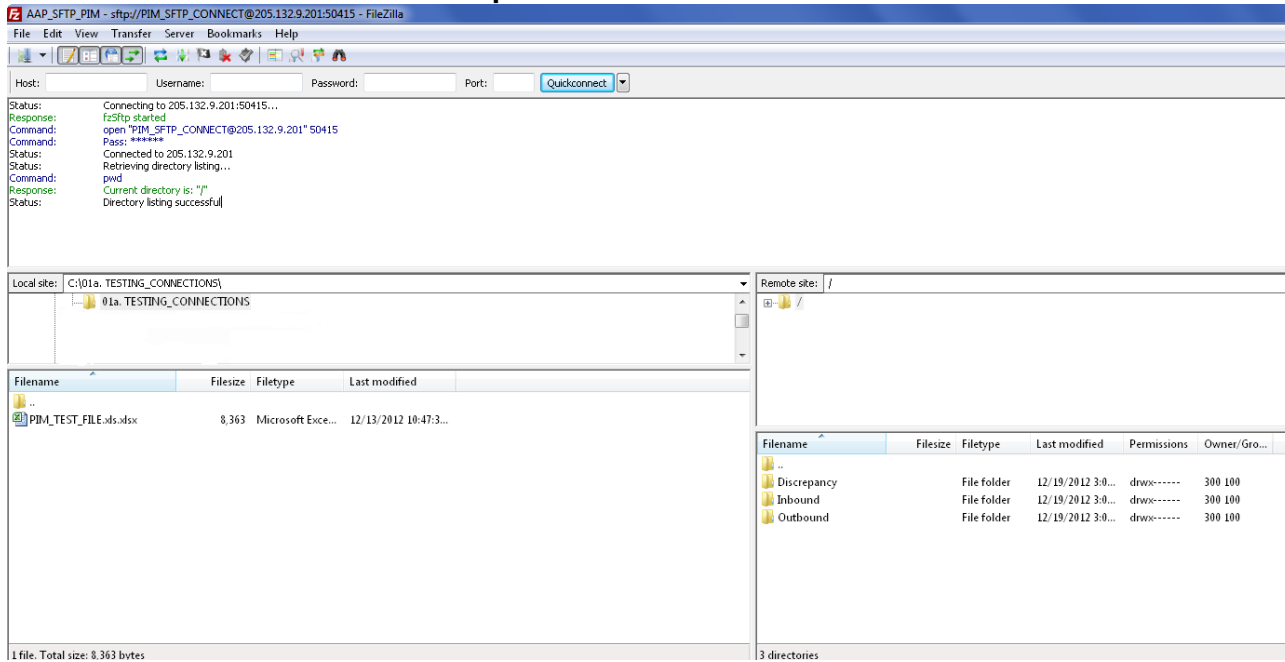
**Legend: 1. Toolbar, 2. Quickconnect bar, 3. Message log, 4. Local pane, 5. Remote pane, 6. Transfer queue**

1. In the Local Pane, navigate to the location file.
2. To process the file, select and drag your file from the Local Pane (left) to the Remote Pane (right) into the appropriate folder.
3. The SFTP process will begin.
4. You can see the progress and all messages in the Message Log.
5. The Transfer queue on the bottom of the screen will display the transfer in 1 of 3 tabs: Queued files (waiting to process), Failed transfers, Successful transfers.

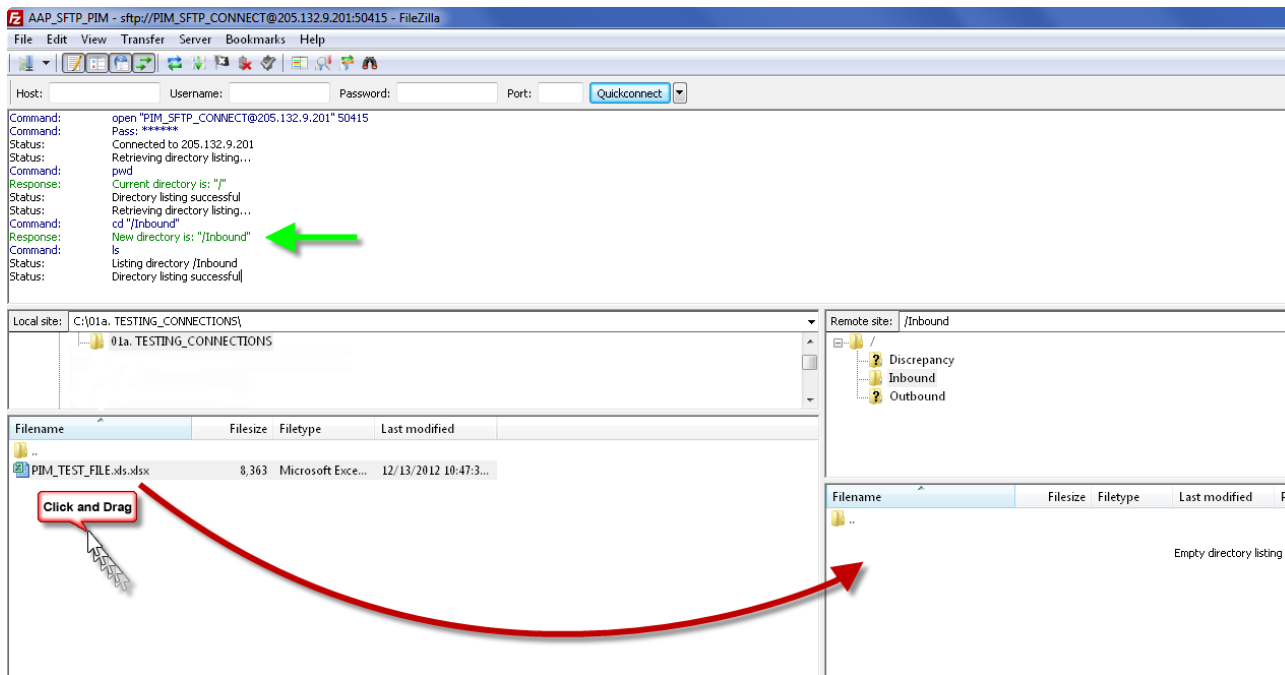
**→ See screen shots on the following pages for examples.**

➔ **Connecting & Navigating to the Inventory File**

You will see a screen similar to the one below.  
The bottom right panel contains 3 folders: Discrepancy, Inbound, and Outbound.  
Select the Inbound folder for file uploads.



➔ **Moving the file from the left Local Pane (your pc) to the right Remote Pane (AAP's server)**



FileZilla provides excellent online documentation for their product.  
For further information, screen shots & help using FileZilla, please go to their website:  
<http://filezilla-project.org/>